

Pathology 3D

a modern approach to learning



19
organs



134
pathologies

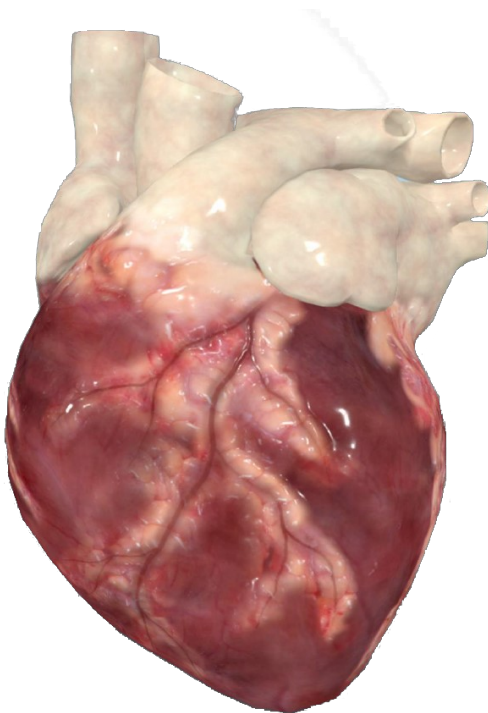


153
microslides



179
macroslides

Model morphological manifestations in an highly realistic 3D environment



Benefits:

Realistic visualization of pathological changes in human organs.

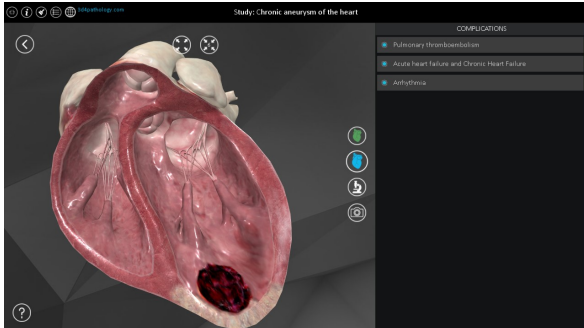
The student can study and model on their own or under the teacher's supervision.

Visualization of morphological changes as well as complications and outcomes.

Complete range of histopathological preparations and macroslides.

User-friendly

A Modern Approach to Learning

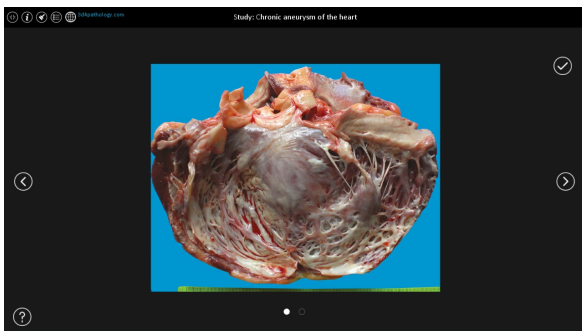
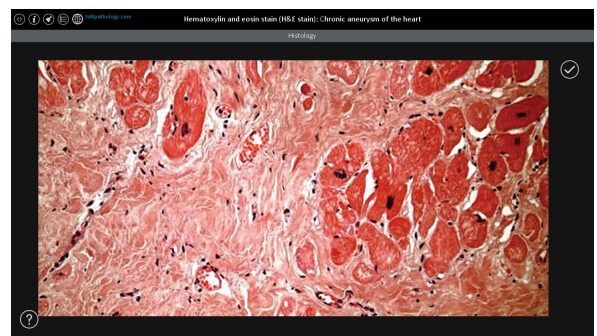


Learn

Students can learn from 160 minutes of educational videos with subject ranging from cell damage to neoplasia and inflammation.

Study

Students can study 134 pathologies and their manifestations on the organs, possible complications and outcomes.

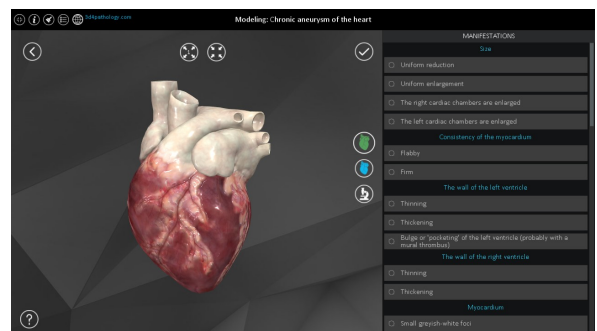


Visualize

Students can visualize pathologies on 19 highly realistic organ 3D models as well as consult the 179 macroslides and 153 microslides.

Model

Students can model pathological manifestations on healthy organs thus further understanding the morphological changes.



Chronic aneurysm of the heart			
Number of points: 8/0 (0%) Mocking time: 2 Minutes 25 Seconds			
PARAMETER	CORRECT ANSWER	USER'S ANSWER	POINT
MANIFESTATIONS			
Size	The left cardiac chambers are enlarged	The left cardiac chambers are enlarged	1
Consistency of the myocardium	Flabby	Flabby	1
	Firm	Firm	1
The wall of the left ventricle	Bulge or 'ballooning' of the left ventricle (probably with a mural thrombus)	Bulge or 'ballooning' of the left ventricle (probably with a mural thrombus)	1
Myocardium	A large grayish white focus	Parameter was not chosen	0
Coronary arteries	Atherosclerosis (fissured, ulcerated, hemorrhagic, thrombotic lesion)	Parameter was not chosen	0
COMPLICATIONS			
	Pulmonary thromboembolism	Pulmonary thromboembolism	1
	Acute heart failure and Chronic Heart Failure	Parameter was not chosen	0
	Atrial fibrillation	Parameter was not chosen	0
HISTOLOGY			
Hematoxylin and eosin stain (H&E stain)	Chronic aneurysm of the heart	Chronic aneurysm of the heart	1

Evaluate

Students can test their knowledge with the software to discover if they are able to pick the correct manifestations, complications and microslide.